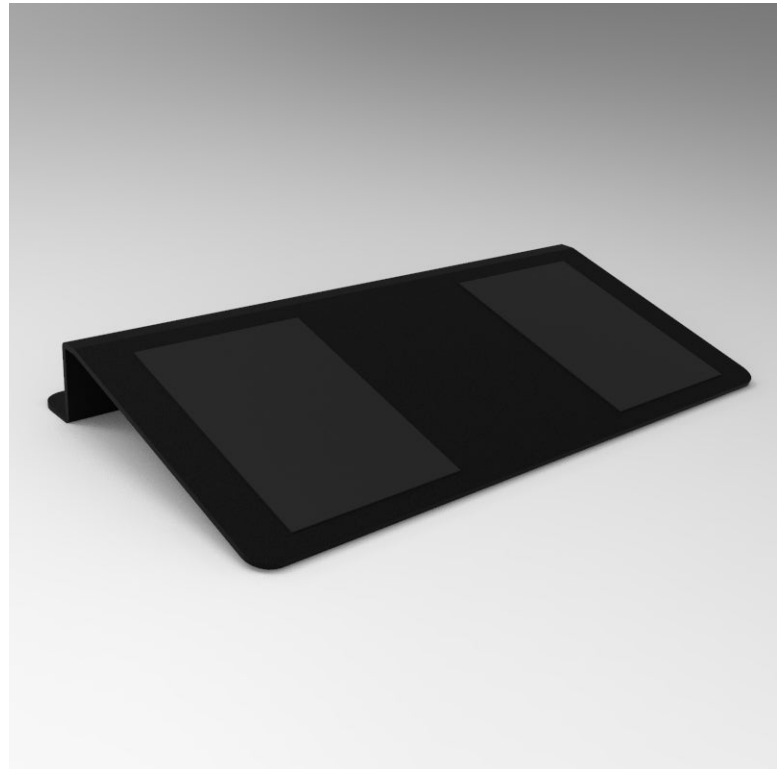


15 Degree Squat Wedge

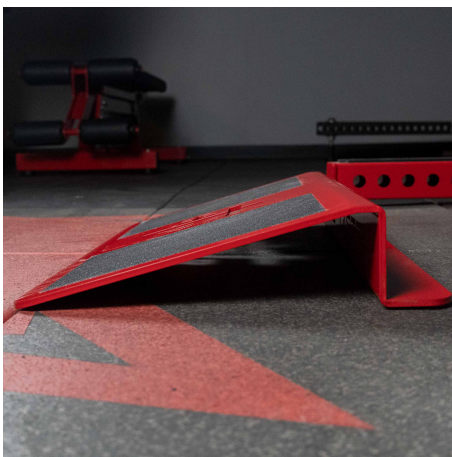
SPECS

Material Tubing	1/4"
Height	3.5"
Width	24"
Depth	16"
Weight	32 LBS
Foot Print	3.5" x 24" x 16"
Made In Usa	Yes



Our Squat Wedge features a 24" x 14", 15-degree angled platform, large enough to support both feet for exercises like squats and calf raises. Single units come in Black Texture with no center logo; for custom colors, check out our Custom Squat Wedges available in packs of 5 or more. This specific size and angle were requested by Strength Coach Tobias Jacobi, who detailed its role in training in an article.

FEATURES



15 Degree Angle



24" x 14"



1" and 5/8" Storage Hole