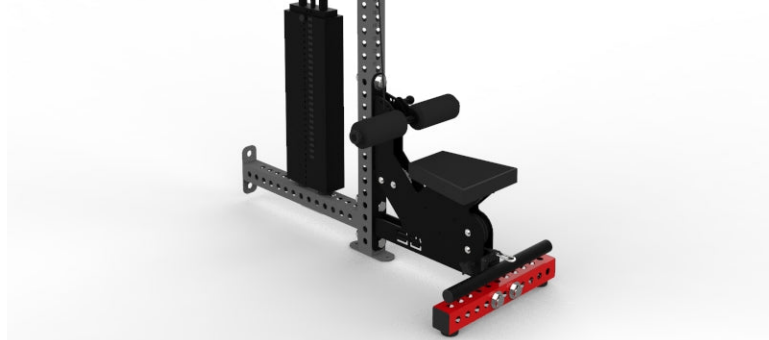


Rack Mounted Lat Pull Down

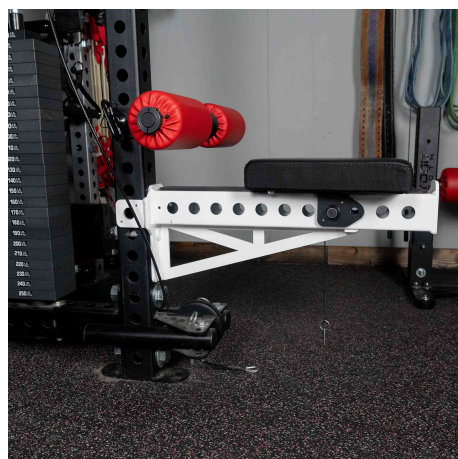
SPECS

Material Tubing	-
Height	-
Width	-
Depth	-
Weight	-
Foot Print	-
Made In Usa	Yes



The Rack Mounted Lat Pull Down unit was designed to be mounted to a Stray Dog Strength rack, it can also be mounted to a wall, but it cannot be mounted to other brand 1" hole racks, you would need our Wall Mounted Lat Pull down unit, as it has a slotted hole to accommodate for the difference in different brand hole spacing.

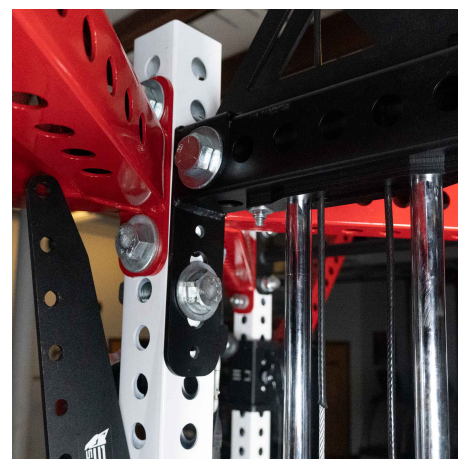
FEATURES



Removable Seat and Knee Hold



Fixed Low Pulley Can be added



Slotted Crossmember