

## SPECS

### Lat Seat

Material Tubing	1/4" Steel plate
Height	6"
Width	12" tapered to 10"
Depth	13"
Weight	8.5 LBS
Foot Print	6" x 12" x 13"
Made In Usa	Yes

The Lat Seat was designed to fit on a Spotter arm to be an adjustable height seat, which you can also adjust the depth of by using the various holes on the Spotter Arm. The Lat Seat also fits on an upright to be used as a back support or can be used for seal rows on a Spotter Arm. Comes With a Stray Dog Hitch Pin. The Lat Seat is only available online with Black Upholstery but can be done in colors on a custom made to order basis.

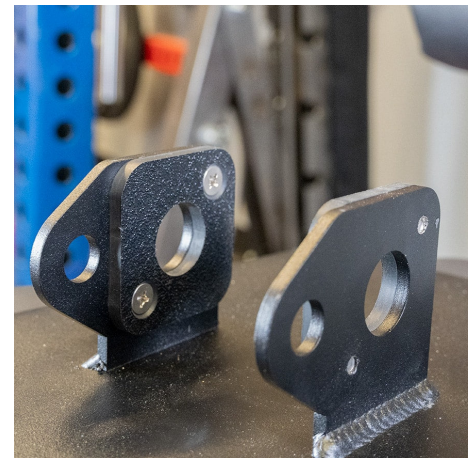
## FEATURES



Attach to spotter arm for seat



Attach to 3x3 tubing with 1" or 5/8" holes



Plastic to protect post/spotter arm