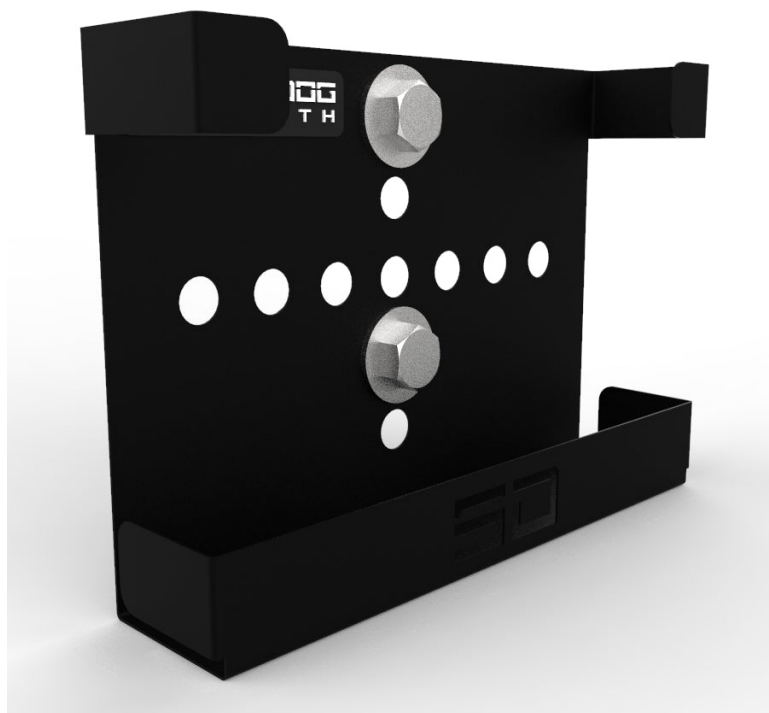


Airex Pad Storage

SPECS

Material Tubing	16 Gauge Steel
Height	4"
Width	17"
Depth	12"
Weight	10 LBS
Foot Print	4" x 17" x 12"
Made In Usa	Yes

FEATURES



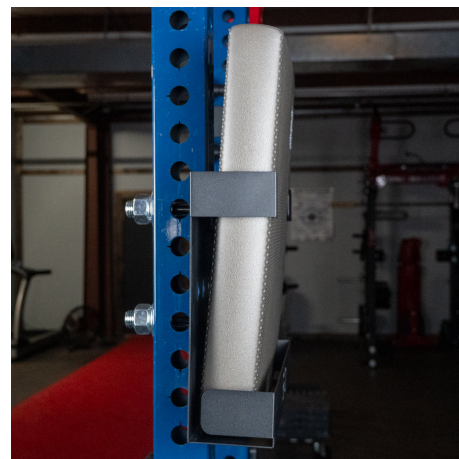
Our Airex Pad Storage system mounts to any upright or crossmember with 1" holes, offering a clean, secure way to store Airex pads in your facility. Designed specifically for 20" x 16" x 2.5" Airex pads, this attachment keeps them off the floor and easily accessible. The compact, space-saving design helps maintain an organized training environment while protecting the pads from unnecessary wear. Included with our Pro Basketball Storage Cart or available as a standalone attachment.



Attach To Uprights



Attach To Crossmember



Fits 20"x16"x2.5" Airex Pad