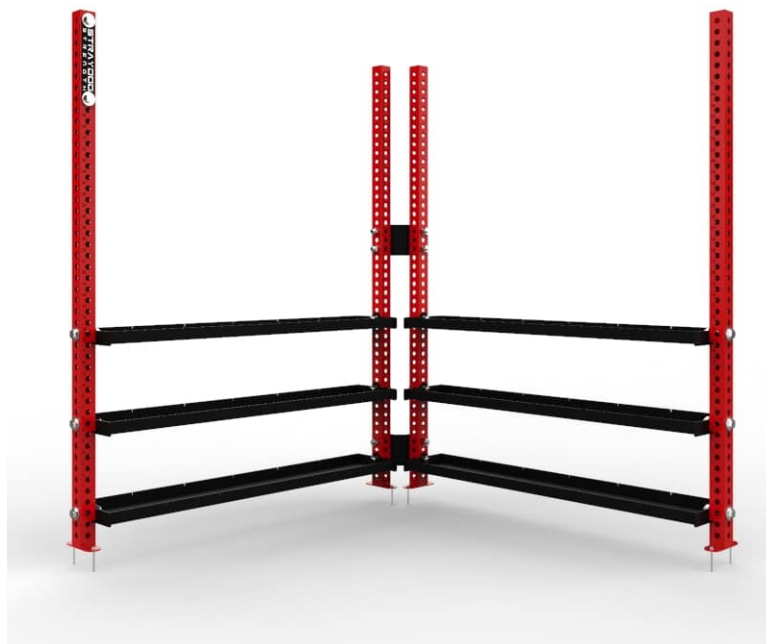


# Corner Storage

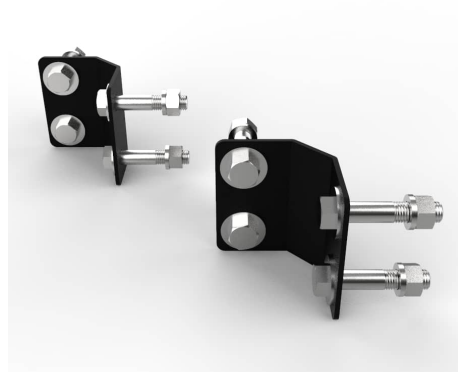
## SPECS

Material Tubing	3x3" 11 Gauge Tubing
Height	96"
Width	-
Depth	-
Weight	-
Foot Print	-
Made In Usa	Yes



The Corner Storage Unit was designed to turn our standard uprights and trays into a space saving corner storage unit that can easily be ordered. These units can be done up to 5 levels of Trays high for a maximum of 720" of Storage Space. They do not need bolted down as they are so wide and heavy due to the trays. They come with full length 96" uprights to use for storage but can also be cut down upon request.

## FEATURES



Brackets Available Individually



43" DB Trays



43" Flat Trays