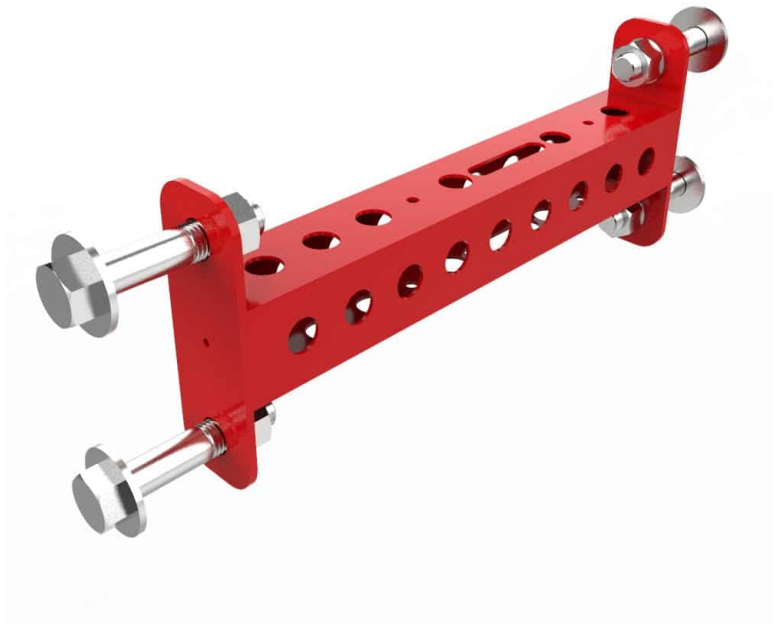


Crossmembers

SPECS

Material Tubing	3x3 11 Gauge
Height	3"
Width	3"
Depth	30" or 43"
Weight	23-35 LBS
Foot Print	3" x 3" x 30"
Made In Usa	Yes



Our Crossmembers are available in 20", 30", 43" and 72" options or you can use our Custom Crossmember Brackets paired with any length 3×3" tube to create a custom length crossmember. The 20" and 30" Crossmembers also feature our proprietary guide rod hole pattern to add a machine attachment such as a Cable Column, Lat Pull Down/Low Row or Belt Squat Lat Pull Down Combo.

FEATURES



Guide rod hole pattern



Attachment storage



3.75" underneath for feet