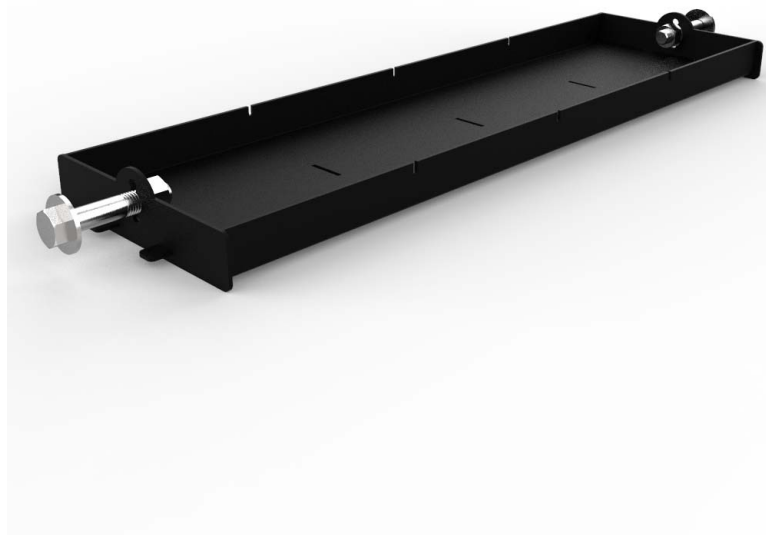


# Flat Storage Trays

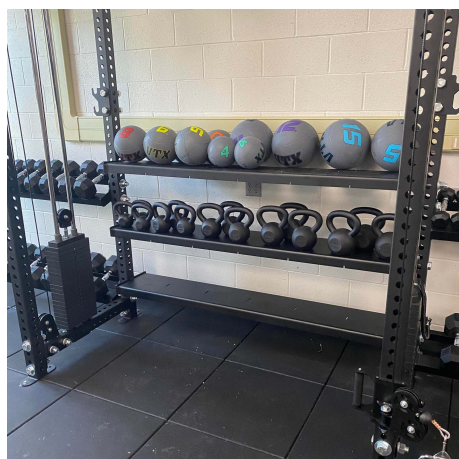
## SPECS

Material Tubing	1/4" Steel plate
Height	3"
Width	43" or 72"
Depth	12"
Weight	44 or 90 LBS
Foot Print	3"x 43" or 72" x 12"
Made In Usa	Yes

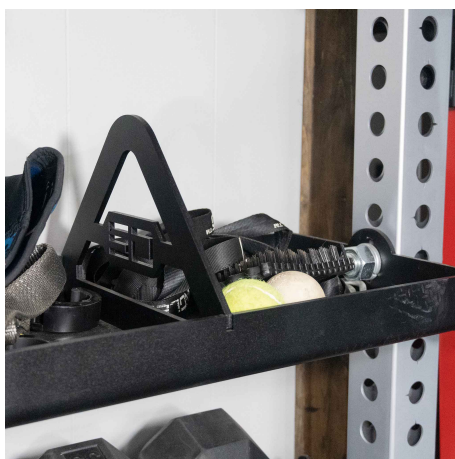


Flat Trays were designed to maximize the space in facilities, the back two posts of a half-rack or ATR unit are not used for anything, so add a Flat tray for Kettlebells, Balls, Bumpers, or anything else you want to store on them.

## FEATURES



Can flip lip down for easy access



Add Divider to separate items



43" Tray in rack