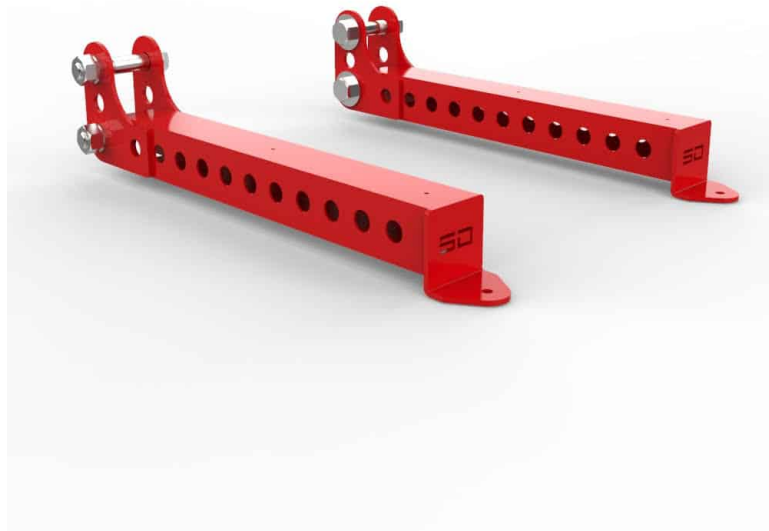


Front Feet

SPECS

| | |
|-----------------|--------------|
| Material Tubing | 3x3 11 Gauge |
| Height | 3" |
| Width | 3" |
| Depth | 25" |
| Weight | 35 LBS |
| Foot Print | 3"x 3" x 25" |
| Made In Usa | Yes |

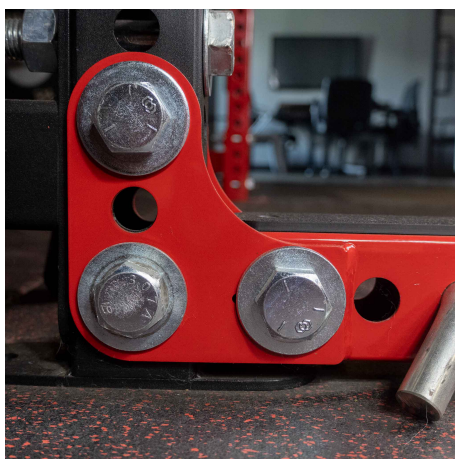


The Front Feet Attachment was designed to add stability to your rack, especially when it's not bolted down. Similar to the Half Rack Band Attachment, but doesn't include the four band pegs which can be added for band resisted lifts. Each attachment features UMHW plastic, like our spotter arms, to protect the frame have a nice finish for years to come.

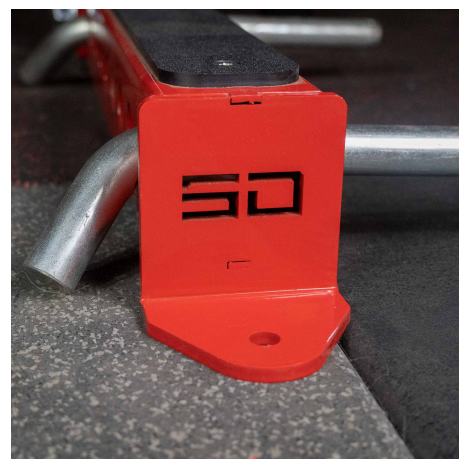
FEATURES



Attach to Rack or ATR



Fits SDS Racks Only



SD Logo