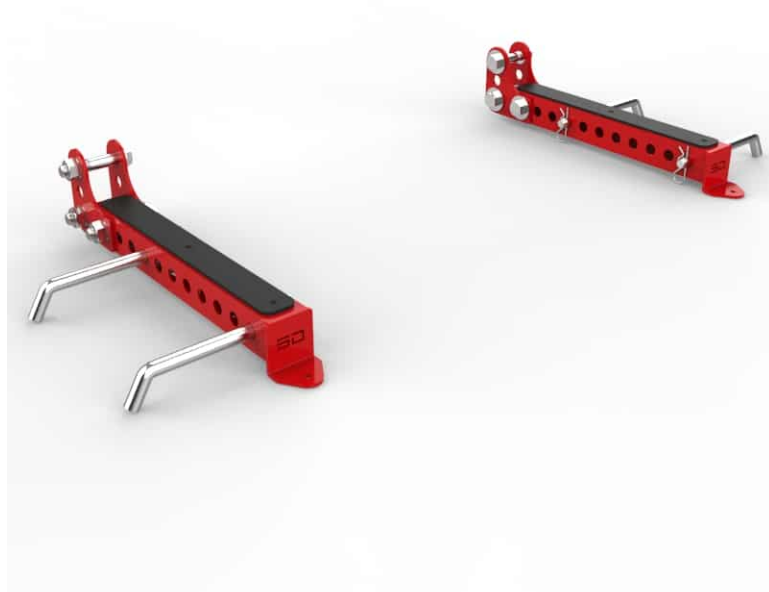


Half Rack Band Attachment

SPECS

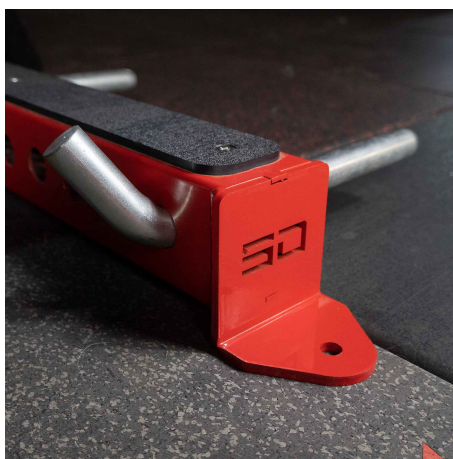
Material Tubing	3x3 11 Gauge
Height	3"
Width	3"
Depth	25"
Weight	35 LBS
Foot Print	3"x 3" x25"
Made In Usa	Yes



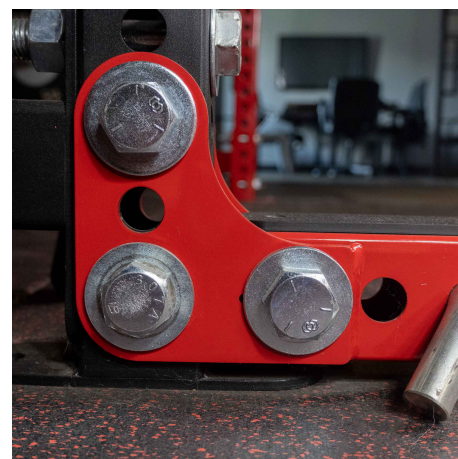
FEATURES



10 holes for band peg adjustment



Bolt Down Tab



Strong Steel Plate Bracket Construction