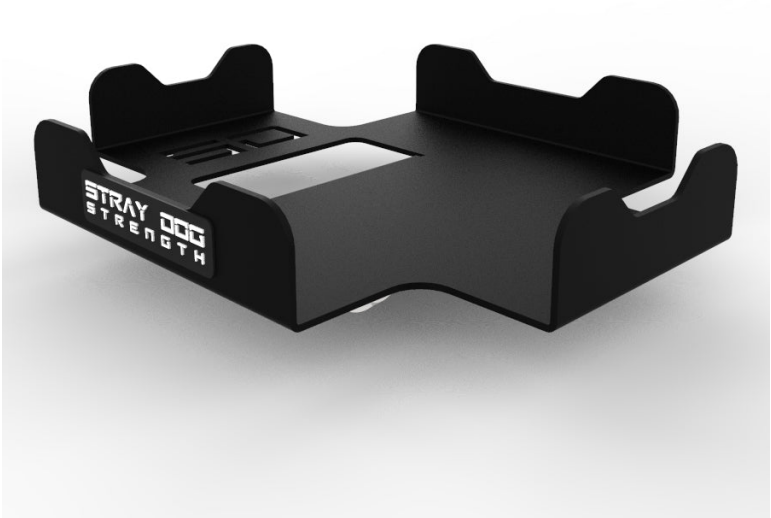


Lifting Block Storage

SPECS

Material Tubing	1/4" Steel
Height	
Width	
Depth	
Weight	22 LBS
Foot Print	
Made In Usa	Yes

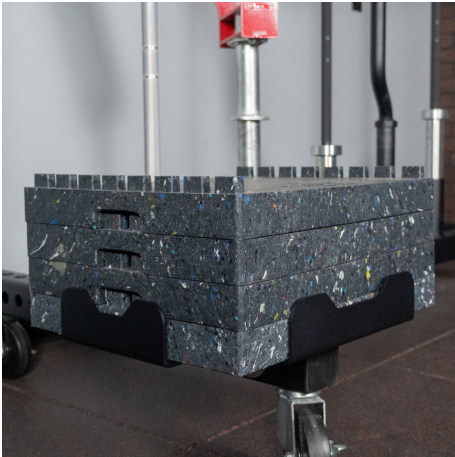


Our Lifting Block Storage system mounts to any crossmember with 1" holes, providing a sturdy, organized solution for storing Lifting Blocks in your facility. The angled arms hold blocks securely in place, keeping them off the floor and easy to access when needed. This space-saving design helps maintain a clean, efficient training environment. Included with our Pro Basketball Storage Cart or available as a standalone attachment.

FEATURES



Add To Crossmembers



Stack Multiple 19"x15.5 Lifting Blocks



Add To Combat Hex Bar Storage for portable storage