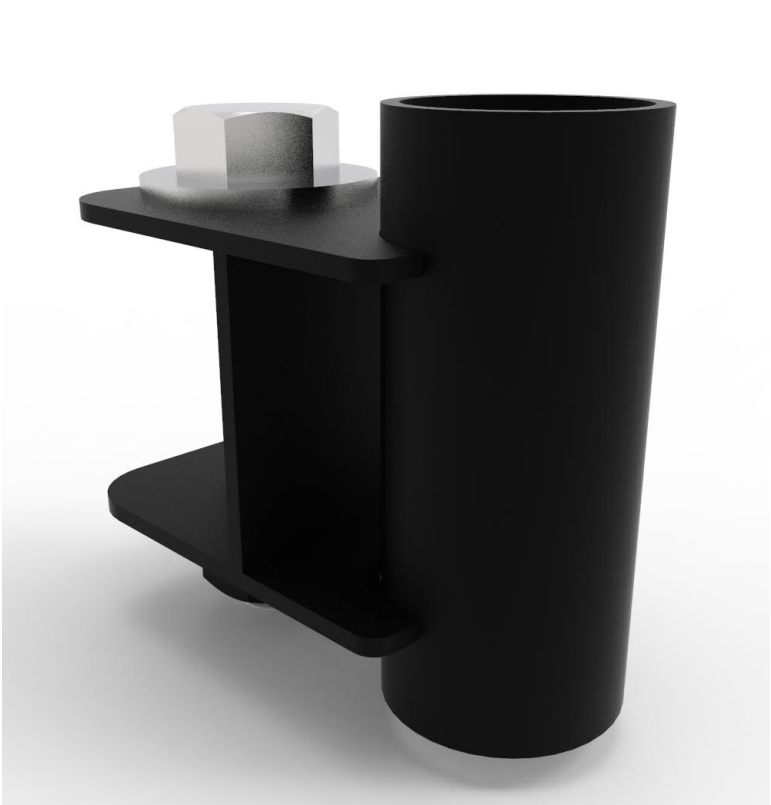


Low Bar Storage

SPECS

Material Tubing	1/4" Steel plate
Height	3"
Width	5"
Depth	6"
Weight	3 LBS
Foot Print	3"x5"x6"
Made In Usa	Yes



The Low Bar Storage mounts to a 3x3" horizontal tube with a single bolt, providing secure storage for a single barbell. Compatible with any rack, ATR, or Low Bridge, it's ideal for holding barbells, dip attachments, and other accessories.

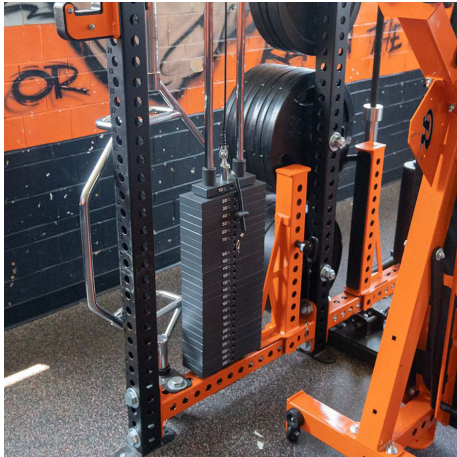
FEATURES



Bolt onto any 1" hole



Open Design



Fits next to stack