

# Straight Chin Up

## SPECS

Material Tubing	1/4" Steel plate
Height	6"
Width	43"
Depth	3"
Weight	16 LBS
Foot Print	6"x 43" x 3"
Made In Usa	Yes

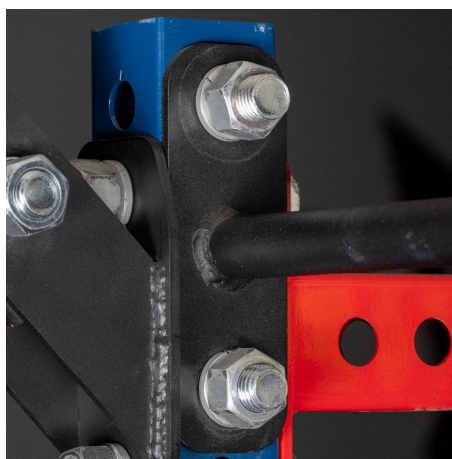


The Straight Chin-Up Bar features a black textured powder coat finish for enhanced grip. With a 1.5" diameter and a width of 43", it fits perfectly between rack uprights. This bar is a key component of our STR rack packages, and every package includes one. Designed for versatility, the bar can be attached at any hole on the upright, allowing you to adjust the height as needed.

## FEATURES



43" Wide



Comes with 4 bolt assemblies



Black Texture Finish