

# Triphasic Arms

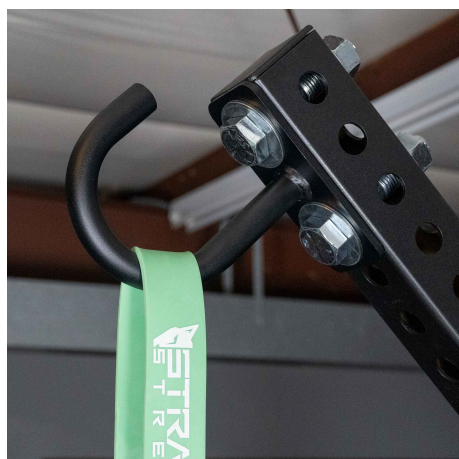
## SPECS

Material Tubing	3x3" 11 Gauge
Height	36"
Width	3"
Depth	3"
Weight	30 LBS
Foot Print	36" x 3" x 3"
Made In Usa	Yes

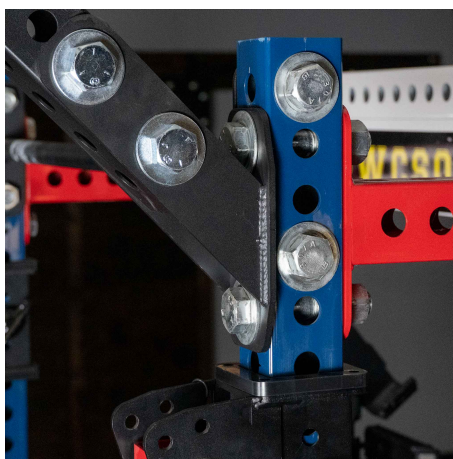


Triphasic Arms can be added to any 3x3" racks with 1" holes to hang bands on for assisted/Triphasic Jumps. Our Lever and Alpha Arms can also be pinned up at an angle to achieve this but the Triphasic arms are an always ready solution that can be added with Lever or Alpha Arms as well.

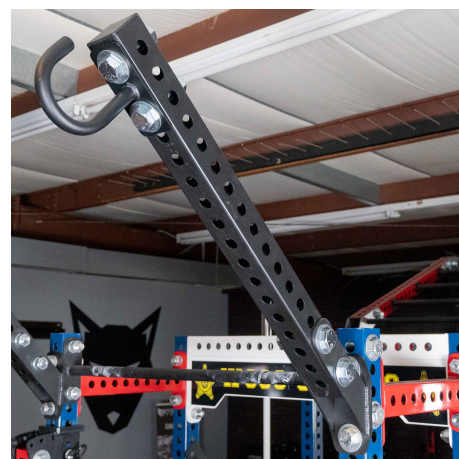
## FEATURES



Band Loop



Attach to any 1" Hole Rack



36" Tube