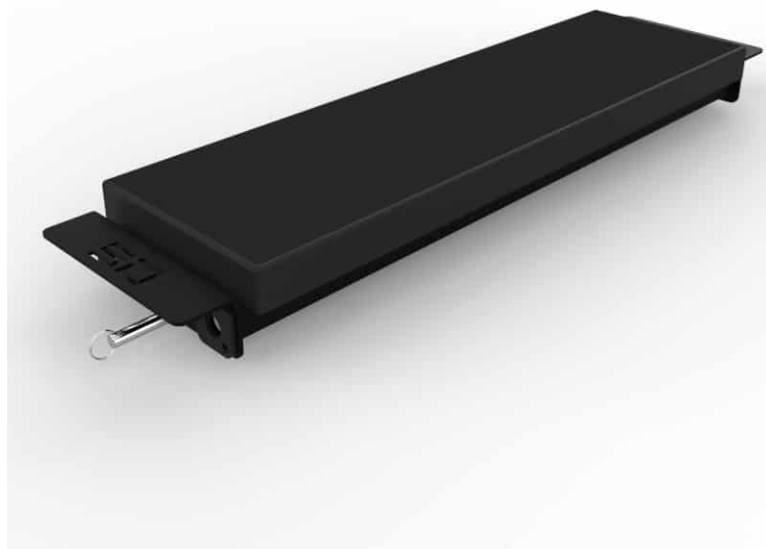


Utility Seat Pad

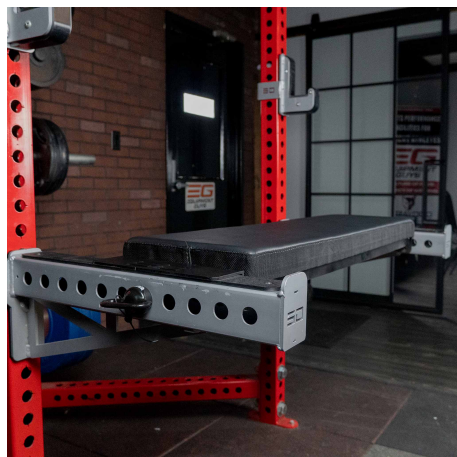
SPECS

Material Tubing	7 Gauge with Pad
Height	4.5"
Width	42.5" (Inside)
Depth	12"
Weight	35 LBs
Foot Print	6"x 42.5" x12"
Made In Usa	Yes

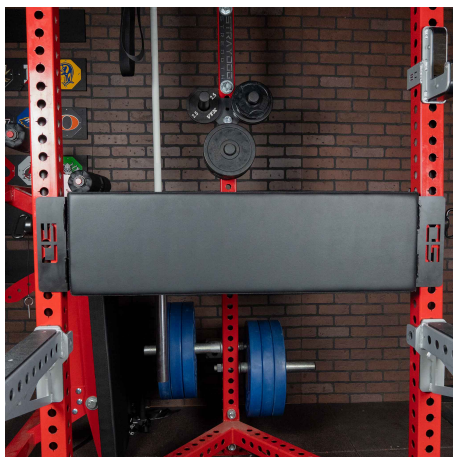


We designed our Utility Seat for racks that are 49" wide with 3x3 tubing and 5/8" or 1" holes. The seat can attach to the spotter arms or the upright. The pad is 40" x 12" and is the same that we use on the Alpha Bench, it has dense foam that will support your foot for box jumps, step ups and other exercises where you would be standing on the pad.

FEATURES



Add to Spotter Arms



Add To Uprights



5/8" and 1" Holes