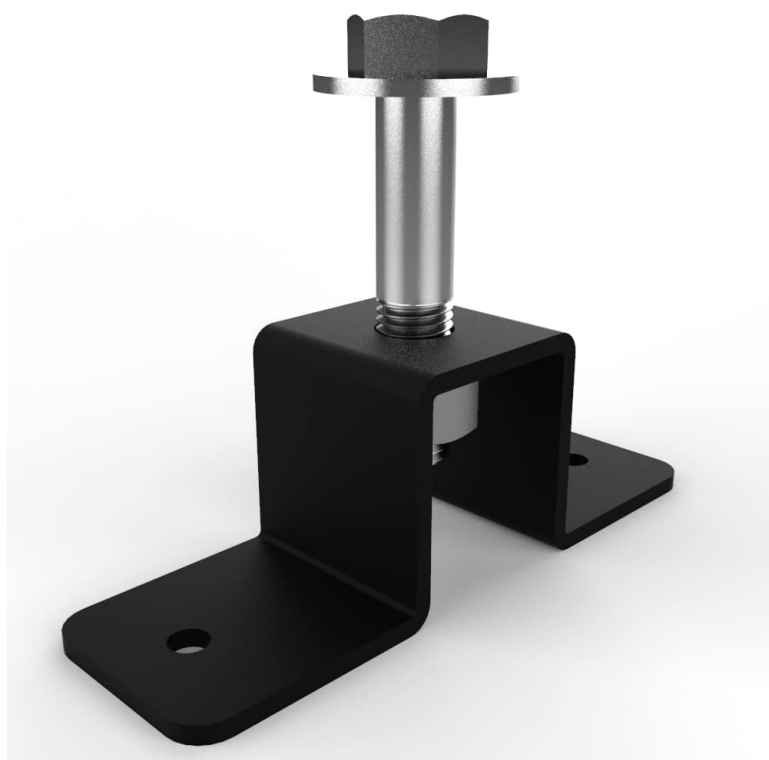


# Floor/Wall Mount 3x3 Bracket

## SPECS

Material Tubing	1/4" USA Steel
Height	3.25"
Width	9.5"
Depth	3"
Weight	6 LBS
Foot Print	3.25" x 3" x 9.5"
Made In Usa	Yes



The Floor/Wall Mount Bracket was designed for 3x3 tubes allowing customers to mount a 3x3 tube to the floor or a wall. They are sold individually and come with one 1" bolt assembly, they have two 1/2" mounting holes 7.5" on center to mount to the Floor/Wall. This allows customers to create a low beam storage with their own 3x3 tubes or make a wall mounted storage/attachment station.

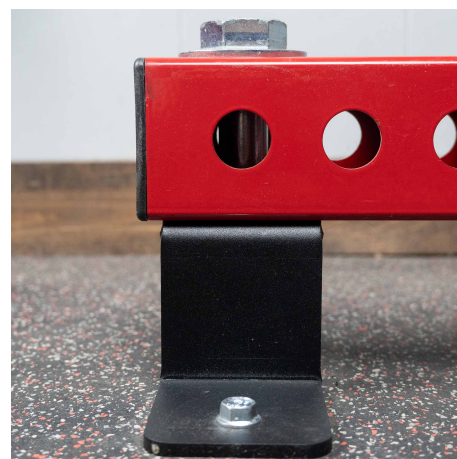
## FEATURES



9.5" Wide Bracket



Hole for 1" Bolt



Mount 3x3 Tube to bracket