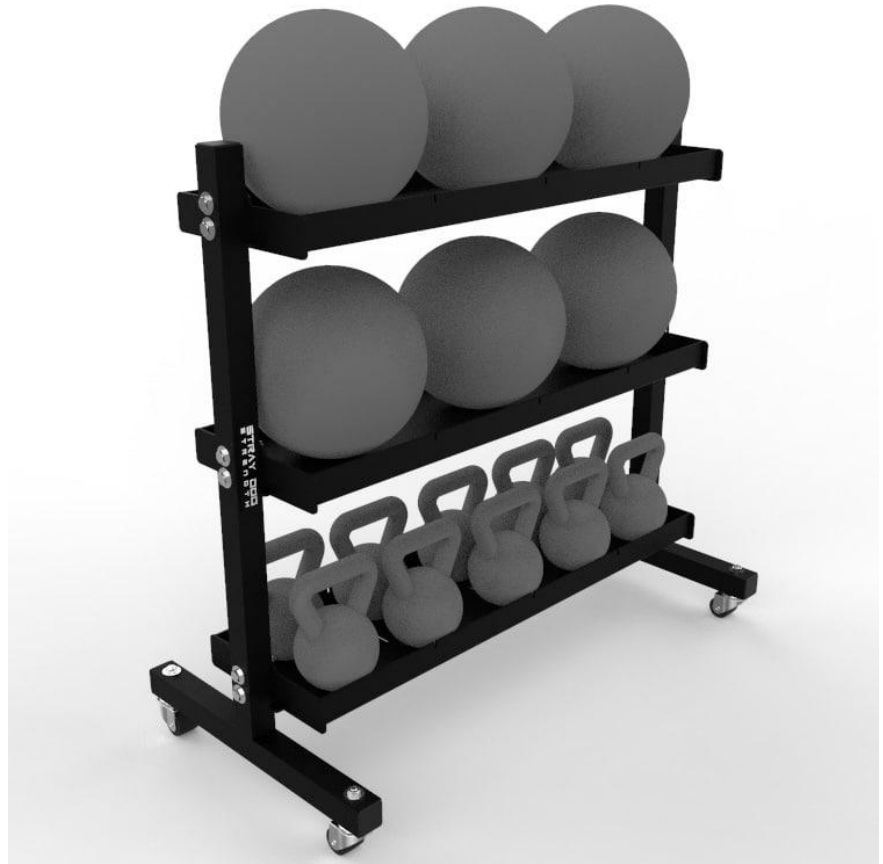


Basic Kettlebell and Medicine Ball Rack

SPECS

MATERIAL	2x2 11 Gauge
HEIGHT	-
WIDTH	43" or 72"
DEPTH	-
WEIGHT	155-295 LBS
FOOT PRINT	-
MADE IN USA	YES



The Basic Med Ball and Kettlebell Rack were designed to be a cost-effective storage unit that can hold Medicine Balls and Kettlebells and can be 43" or 72" wide with or without wheels. The units are constructed out of 2x2 tubing with our Flat Storage Trays at either length connecting the sides.

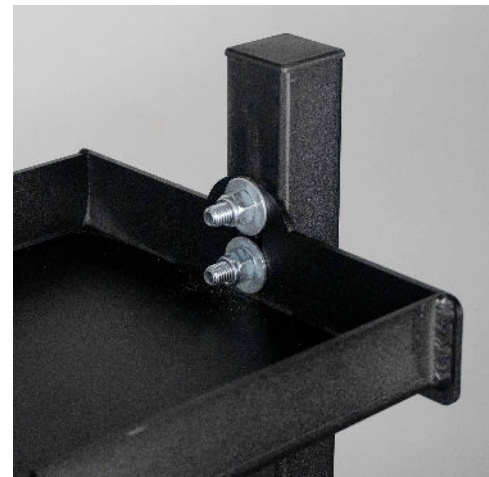
FEATURES



3 43" Flat Trays



12" Deep Trays



Strong Construction