

# Floor/Wall Mount 3x3 Bracket

## SPECS

MATERIAL	1/4" USA Steel
HEIGHT	3.25"
WIDTH	9.5"
DEPTH	3"
WEIGHT	6 LBS
FOOT PRINT	3.25" x 3" x 9.5"
MADE IN USA	YES

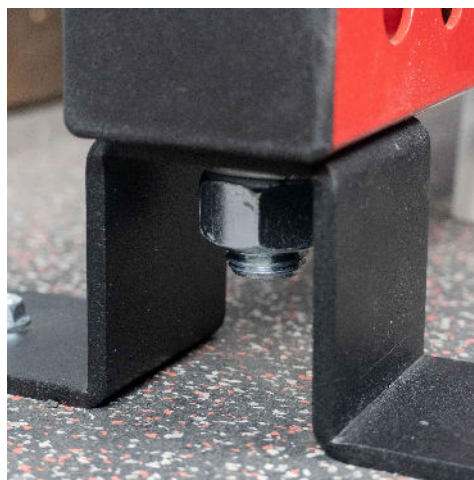
## FEATURES



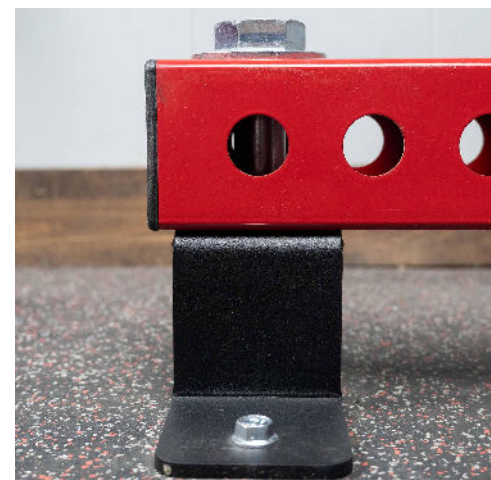
The Floor/Wall Mount Bracket was designed for 3x3 tubes allowing customers to mount a 3x3 tube to the floor or a wall. They are sold individually and come with one 1" bolt assembly, they have two 1/2" mounting holes 7.5" on center to mount to the Floor/Wall.



9.5" Wide Bracket



Hole for 1" Bolt



Mount 3x3 Tube to bracket